

3-4-16  
Cuey Larson

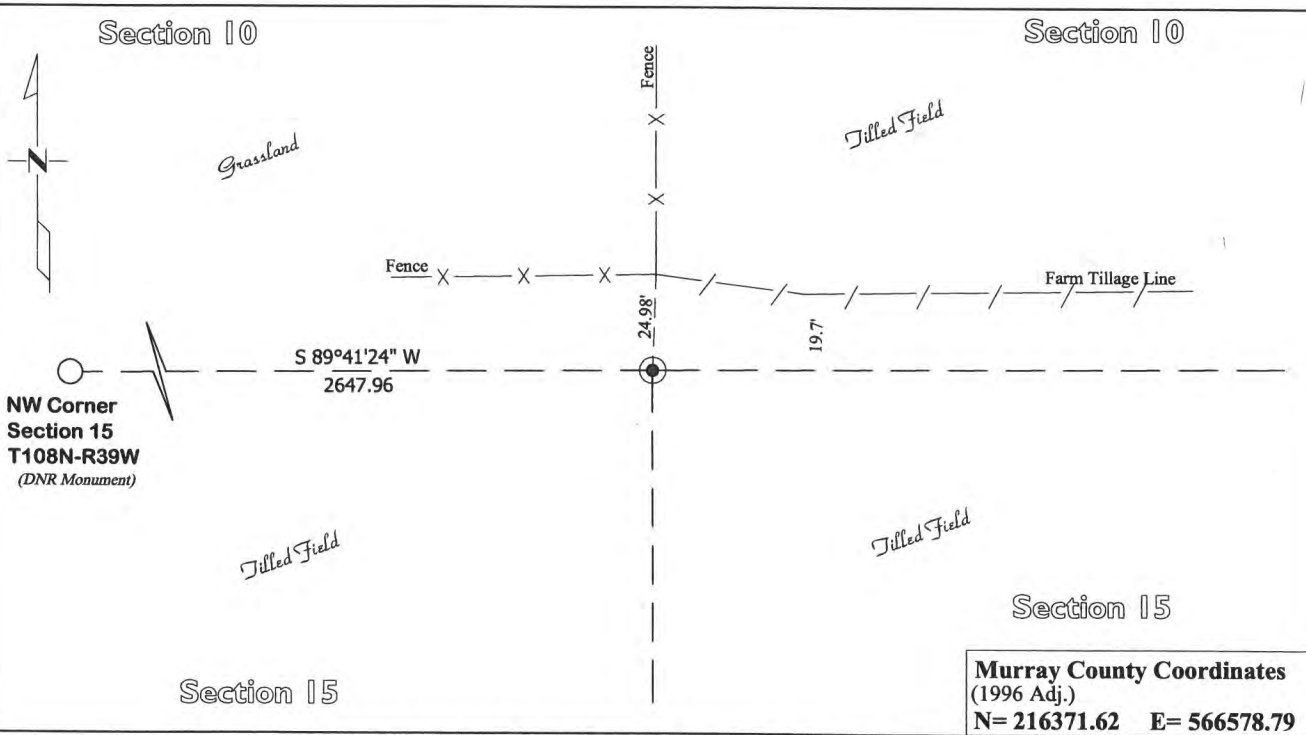
# CERTIFICATE OF LOCATION OF GOVERNMENT CORNER

North Quarter Corner of Section 15, Township 108, Range 39  
Fifth Principal Meridian, State of Minnesota, County of Murray

At the corner location shown on the sketch:

On Jan. 26, 2016 found Nothing  
DATE

left monument as found       lowered monument       removed monument (explain)  
 On Mar. 8, 2016 placed a Iron Rod with a "46169 46171" stamped plastic cap  
DATE



Statement of evidence for this corner location is on back of this page.

I hereby certify that this survey, plan, or report was prepared by me or under my direct supervision and that I am a duly Licensed Land Surveyor under the laws of the state of Minnesota.

Signature [Signature]  
Date 3/14/16

Typed or Printed Name: Joshua M. Stern  
Reg. No. 46169

# **STATEMENT OF EVIDENCE**

## ***North Quarter Corner Section 15, T108N-R39W***

- 1861 Lewis Brockmann was contracted by the United States Government Land Office to perform the Original Public Land Survey in this township. Brockmann records in his field notes that he "Set ¼ Sec. Corner".
- June 1915 J.R. Johnston, County Surveyor, records in County Surveyor's Record Book pages 114, 254, and 277 "Stone set previously and located by testimony of old residents." and dimensions to this corner position.
- March 8, 2016 Joshua M. Stern, LS 46169, searched this area for the 1915 stone, but found nothing at the corner position. For the East / West position of this corner, Stern used County Survey records for sections 10, 11, 14, and 15. Stern prorated (not on a straight line) from the NE corner of Section 14 to the NW corner of Section 15. For the North / South position of this corner, Stern prorated the East line of Section 15 and the North-South Quarter line of Section 15 per dimensions found on County Survey Records, page 254. This is believed to be the position of the 1915 stone. An Iron Rod with a "46169 46171" stamped plastic cap was set at this corner position.